

## Discussion

---

What are the advantages of a metadata editor such as Reggie?

What are the disadvantages of a metadata editor such as Reggie?

Do you think that Reggie has a role to play in your institution?

## Further Information

---

The aim of the Reggie Metadata Editor is to enable the easy creation of various forms of metadata with the one flexible program. The Reggie Metadata Editor uses a schema file to read in the details of all the elements in a set, their characteristics and descriptions. To create metadata based on a different element set or different language, one has simply to create a new schema file.

The version of Java security used by Web browsers does not allow copy and paste between applet windows and other windows at the current time. The next version is expected to allow this. Reggie provides two work-arounds to this limitation. If the metadata is small in size, it can be exported to a web page. Otherwise, Reggie can email its results to the user if they provide their email address.

Reggie has been developed by the Resource Discovery Unit of the DSTC. For further information about DSTC see <URL: <http://www.dstc.edu.au/>>.



*Institutional Web Management Workshop*

# *Metadata Tools Reggie*

## Introduction

---

This document gives instructions on using the Reggie Metadata Editor. The document was produced for use by participants on the Metadata session at the **Institutional Web Management** workshop held at Newcastle University on 15-17 September 1998.

## Aims of This Exercise

---

These exercises provide familiarisation with the Reggie Metadata Editor. The exercises are intended for people who wish to gain experience of a metadata editor.

Please note that in order to complete these exercises you must have access to a web browser which supports Java (such as Netscape or Internet Explorer version 3 or above).

## Using Reggie

---

### Task 1 Getting Started

In your web browser enter the address  
<URL: <http://metadata.net/dstc/>>.

The web page will be displayed initially. After a short period the Reggie Java applet will be downloaded. Scroll to the bottom of the window. You should see the Reggie home page, as shown in Figure 1.

Note that Reggie is hosted in Australia. Access to Reggie may be slow at times.



Figure 1 The Reggie Home Page

## Task 2 Launching Reggie

Click on the button labelled **English** in the **Dublin Core** section of the Reggie home page.

A new window will be created as shown in Figure 2.

Note the icon in the top left hand corner of the window. This indicates that it is a Java applet.



Figure 2 The Reggie Metadata Editor

## Task 3 Exploring Reggie's User Interface

Click on the various icons and buttons in the Reggie window, such as the **About Reggie** button in the top right hand corner of the Reggie window. Read the information provided.

Click on the **About Reggie** button again to close the display.

If you are unfamiliar with Dublin Core click on the **About Dublin Core** button. When you have finished reading the information click on the **About Dublin Core** button again to close the display.

Click on the + button. When you have finished reading the information click on the **About Dublin Core** button again to close the display.

## Task 4 Using Reggie to Create Dublin Core Metadata

Use Reggie to create Dublin Core metadata for a web resource, such as your University home page.

An example is shown in Figure 3.

Note that you do not have to complete all the fields.



Figure 3 Creating DC Metadata Using Reggie

## Task 5 Viewing The Metadata In Various Formats

Click on the **Select a Syntax** button near the top of the window and select the **HTML 4.0** syntax.

Click on the **Preview** button near the top of the window. The metadata should be displayed in a format similar to that shown in Figure 4.

```
<META NAME="DC.Title" LANG="en" CONTENT="University of Bath home page"
<META NAME="DC.Creator" LANG="en" CONTENT="John Smith"
...
```

Figure 4 Dublin Core Metadata in HTML 4.0 Syntax

Click on the **Select a Syntax** button (which should now be labelled HTML 4.0). Select the **HTML 3.2** syntax.

What are the differences between the two syntaxes? Can you explain these differences?

Click on the **Select a Syntax** button again. Select the **RDF** syntax.

What are the differences between the HTML 4.0 and RDF syntaxes? Can you explain these differences?

## Task 6 Saving The Metadata

Click on the **Export** button near the top of the window. Select the **Web Browser** destination and click OK. A new web browser windows should be created containing your metadata. Copy this metadata and paste it into an editor (such as Notepad).

Examine the URL of the page.

Why do you think Reggie uses this technique for making the metadata available?

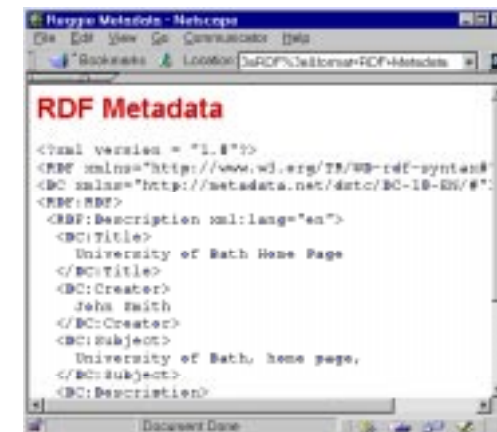


Figure 5 Viewing the Metadata

## Task 7 Quitting

Click on the **Quit** button on the top right hand corner of the window.