



Using The NWI Search Engine

Introduction

This document describes use of the NWI search engine. The document has been produced for use by participants on the Metadata and Web Tools sessions at the **Institutional Web Management** workshop held at Newcastle University on 15-17 September 1998.

Aims of This Exercise

These exercises describe use of the NWI search engine in order to gain experience of search engines which makes use of fielded searches.

Using NWI

Task 1 Getting Started

In your web browser enter the address
<URL: <http://nwi.lub.lu.se/>>.

Then select the link to display search results in English.

The web page shown in Figure 1 will be displayed.

Note that NWI is hosted in a number of Nordic countries. Access to NWI may be slow at times.



Figure 1 The NWI Home Page

Task 2 Searching

Enter a search term such as **Football** in the search box. Select multiple countries, such as Sweden and Denmark and then click on the **Search** button.

The results of the search will be displayed shown in Figure 2.

Make a note of the number of results.

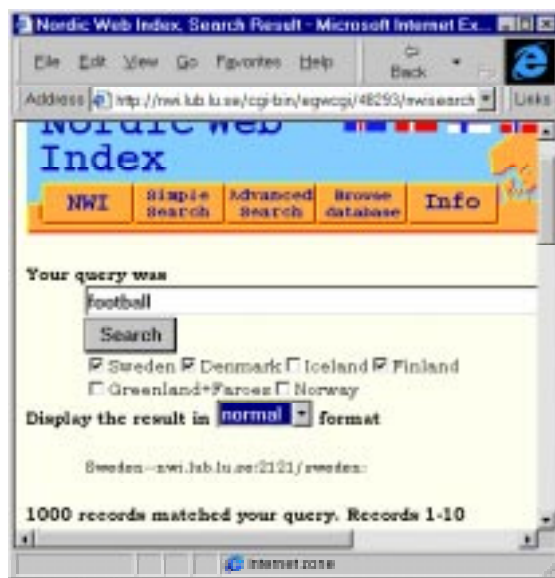


Figure 2 Searching Using NWI

Task 3 Refining the Search

Click on **Advanced Search** option from the bottom of the search results page.

Refine your search so that only pages with a Title which contains Football will be displayed, as shown in Figure 3.

Then click on the **Search** button.

Compare the results of the initial search with the results of the search for titles containing the search term.

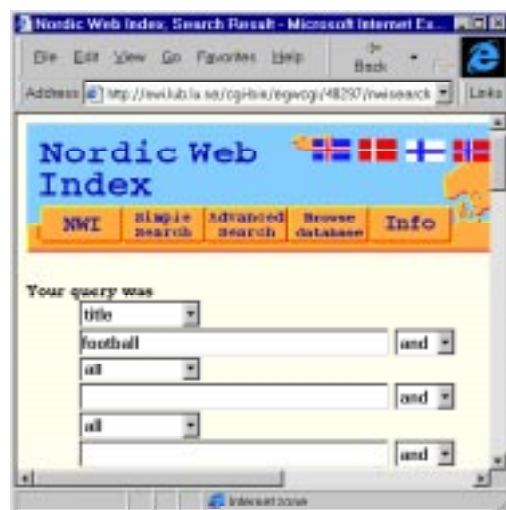


Figure 3 The Advanced Search Page

Task 4 Further Work

Continue exploring the options provided by the NWI search engine.

Click on the **Info** icon and read about the NWI service.

Using Swemeta

Task 4 Getting Started

Return to the NWI home page. Scroll to near the bottom of the window. Then follow the link to SWEMETA. The screen shown in Figure 4 will be displayed.

Evaluate the service.

How does it compare with the main NWI service?

Note The Swemeta service is available at <URL: <http://gungner.u2.lu.se/cgi-bin/egw.cgi/58050/metaquery.egw/-1+desire2.lub.lu.se:2124/swemeta>>



Figure 4 The Swemeta Service

Discussion

NWI provides *fielded* searches using Dublin Core metadata. This makes it possible to search using fields such as Title, Creator, Type, etc.

It is believed that NWI uses heuristics techniques to *guess* fields such as the author. NWI intend to support *fielded* searches using Dublin Core metadata. This will make it possible to search using fields such as Title, Creator, Type, etc.

Which do you think such provide the most accurate results?

How do you think use of these techniques will compare with search engines such as Alta Vista?

What is needed in order for services which provide fielded searches to be widely deployed?