

# The JISC IE Metadata Schema Registry

Access to information on metadata terms & application profiles used for resource description in the UK learning, teaching & research communities

## Metadata standards bodies

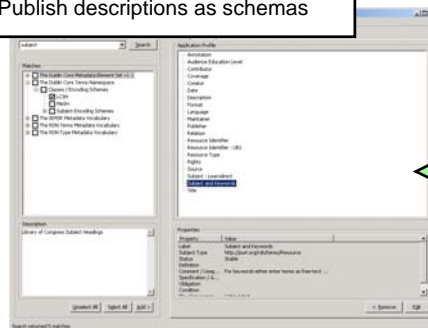
- Serve broad communities
- Develop sets of **terms** as **metadata vocabularies**
- Define **models** for use of terms in **metadata descriptions**
- Provide **bindings** to express descriptions in **formats**

## Metadata implementers

- Build services for particular audiences
- Select **terms** from existing **metadata vocabularies**
- Develop additional **metadata vocabularies**
- Develop **application profiles** to describe use of terms
- Choose appropriate **bindings**

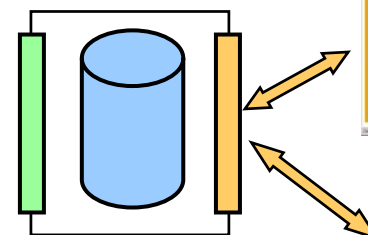
## Schema Creation Tool

- Create descriptions of metadata vocabularies & application profiles
- Query registry server
- Publish descriptions as schemas



## Registry Server

- Aggregate & index schemas
- Publication API
- Query API
- Managed to control quality



## Registry Web site

- Browse, search, navigate



## Metadata Application

- "Get description of term T"

## Outputs

- Models for application profiles for DC & LOM
- Schema creation tool
- Pilot registry server & publication/query APIs
- Pilot registry Web site
- Open-source software
- Policy framework

## Outcomes

- Consensus on models
- Improved disclosure & discovery of metadata terms
- Improved disclosure & discovery of application profiles
- Foundation for advanced functions (mapping, inferencing)

## Benefits

- Consistency in creating application profiles
- Availability of rich data source on metadata terms
- Wider re-use of existing solutions, less duplication of developer effort
- Collaboration between DC and LOM communities
- Contribution to debate on metadata interoperability

## What the project needs (from service providers & other projects)

- |  |   |
|--|---|
| <p>Now:</p> <ul style="list-style-type: none"> <li>Contribute user requirements</li> <li>Give feedback on models</li> <li>Help test tools</li> </ul> | <p>Future:</p> <ul style="list-style-type: none"> <li>Register all metadata vocabularies &amp; application profiles</li> <li>Use registry as information source</li> <li>Develop enhanced applications using registry services</li> </ul> |
|--|---|

## How project will achieve this

- Work with CETIS & Becta as representatives of user community
- Disseminate our work
- Support use of tools
- Evaluation of outputs